

Office to let

Elefterie 18 Office Building

Bucharest, Sector 5, Street Elefterie No. 18

Building information

| | |
|----------------------|-------------|
| Building status | Existing |
| Year of construction | 2009 |
| Parking ratio | 1 / 70 sq m |
| Total building area | |

Commercial terms

| | |
|--------------------|---------------|
| Office space* | after login * |
| Parking | after login * |
| Service charge* | after login * |
| Minimum lease term | after login * |
| Availability | after login * |

* Asking terms for m²/month


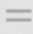



Location



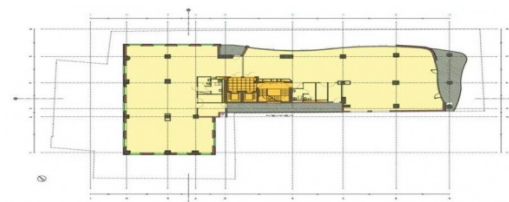
Available space

Building completely leased

Standard fit-Out

-  Air conditioning
-  Raised floor
-  Suspended ceiling
-  UPS
-  Elevators

Typical floor plan



Public transport

Metro: M1, M3

Bus: 122, 126, 137, 138, 168, 226, 236, 268, 336, 368, 668, N110, 104, 123, 124, 601, N115

Contact



+40 21 302 3400

More information